



IN THIS ISSUE

Sharing expertise in China 02

Notable news 04

2018 by the numbers 06

A MESSAGE FROM OUR PRESIDENT & CEO



Each season has its rhythms. During summertime at May Institute, we love to see our playgrounds filled with energetic students enjoying the sunshine. The community outings calendars at our adult programs are filled with warm weather activities such as picnics, baseball games, amusement parks, and beach outings. And at our east coast programs, staff may have a little extra spring in their step.

This summer, we're also celebrating new opportunities, milestones in the lives of the individuals in our care, and partnerships that increase our impact both locally and globally. I am grateful for the support of new friends and old ones, and am energized by an outstanding workforce of 2,000 employees who are focused and driven to succeed.

I am pleased to share these successes with you, and hope you enjoy this issue of @May!

Lauren C. Solotar

Lauren C. Solotar, Ph.D., ABPP

May's youngest students benefiting from Early Learning Program

Our May Center School for Autism and Developmental Disabilities in Randolph, Mass., unveiled updates and renovations including an enhanced Early Learning Program now housed in its own building!

The Early Learning Program focuses on developing the social, communication, and daily living skills of young students, ages 3–12, diagnosed with autism and other developmental disabilities. Its new location allows us to foster a culture specifically based on the needs of young students in a nurturing environment. It provides opportunities for both structured learning in the classroom and experiential learning through play and social interaction.

Our focus on serving very young children reflects current best outcomes research showing that intensive intervention and education based on ABA provide the best chance for reducing the need for long-term services. In some cases, this may facilitate successful transition back to school districts.



Teacher Assistant Tyla Goyette watches Lucas as he communicates using the iPad.

May clinical expert named associate editor of leading ABA publication

Congratulations to **Alice Shillingsburg**, Ph.D., BCBA-D, Senior Vice President of Children's Clinical Services and Training at May Institute. Dr. Shillingsburg has been named an Associate Editor of the *Journal of Applied Behavior Analysis* (JABA), the top-tiered journal that publishes research about applications of the experimental analysis of behavior to problems of social importance.

In making the announcement regarding Dr. Shillingsburg's appointment, JABA noted that, "She has published numerous empirical papers and served as an editorial board member for JABA and other behavior analytic journals. She joins the stellar team of Associate Editors in September of 2019 and will serve a 3-year term."



At May Institute, Dr. Shillingsburg provides clinical leadership to all children's programs including the May Center Schools and the

organization's home- and center-based services. She holds a joint appointment as Assistant Director of the National Autism Center at May Institute.

Dr. Shillingsburg received her Ph.D. in clinical psychology from Auburn University and completed her pre-doctoral internship and post-doctoral fellowship at the Marcus Autism Center.

She is a licensed psychologist and Board Certified Behavior Analyst (BCBA) at the doctoral level. Her clinical expertise includes the development of language and behavioral programming to address a variety of behavioral difficulties and social communication deficits associated with autism and other developmental disabilities.

Dr. Shillingsburg has published over 45 empirical papers on interventions for children with developmental disabilities. ■■■

COVER STORY CONTINUED: **Early Learning Program**

The new program design has also strengthened continuity of care across our school and residential settings for students who require these additional supports. Our clinical team provides oversight in both settings.

We look forward to celebrating many successes with the children in our Early Learning Program. Next up: the May Center School in Wilmington, Mass.!

May Institute is one of the largest providers of private schools specifically serving children with autism. Our four May Center Schools for Autism and Developmental Disabilities in Massachusetts and

California offer full-day, year-round educational services to children and adolescents from preschool to age 22. ■■■



Ethan enjoys using kinetic sand during his sensory break.

Sharing expertise in China

Dr. Ivy Chong presents at International ASD Forum

Ivy Chong, M.B.A., Ph.D., BCBA-D, traveled to Beijing to present two invited lectures and participate in a panel discussion at the International Forum on Treatment and Policies for Autism Spectrum Disorder. The event was attended by hundreds of people and viewed online by 30,000 people in China.



Dr. Chong serves as May's Senior Vice President of Home, School, and Center-based Services.

Her goal was to share May Institute's experience in providing care and support for people with ASD, with an emphasis on applying ABA. Dr. Chong presented two lectures—"Current trends in behavior analytic services

for children diagnosed with ASD" and "ABA and older learners with ASD: Support for transitioning into adulthood." She also partici-

pated in panel discussions, sharing the stage with leaders in the field from various countries.



MAY INSTITUTE'S GLOBAL INITIATIVE: ADVANCING INNOVATIVE CARE ACROSS THE LIFESPAN

Our work in the Middle East, Asia, and other parts of the world is helping to bring applied behavior analytic services directly to the point of need. Our participation in the U.S. State Department's Speaker Program and in the Professional Fellows Program (PFP) (see related articles) has further amplified our reach.

"The National Autism Center at May Institute is focused on improving life outcomes for children with autism across the globe," says **Dr. Cynthia Anderson**, Director of the National Autism Center and May Institute's Senior Vice President of Applied Behavior Analysis.

Our global work includes customizable onsite and remote training and consultation services for parents and professionals focused on autism spectrum disorder and other developmental disabilities. We also offer technical assistance to governmental agencies. Recent partnerships have included organizations from Oman, United Arab Emirates, China, and Singapore.

This summer, Dr. Anderson traveled to India as a guest speaker at the 2019 International Autism Conference, Accountability and Evidence Based Best Practices in Autism. The conference is hosted by the Center for Autism and other Disabilities Rehabilitation Research and Education, a not-for-profit organization founded in Thiruvananthapuram, Kerala, with the aim of transforming the lives of children affected with autism spectrum disorder. ■■■

Experts believe that China's autism prevalence rate is similar to that of other countries, making it likely that 10 million people in the country are diagnosed with autism, with an estimated 2 million of those being children.

To view photos from the Forum, visit mayinstitute.org/ivychong/China.html.

Terese Brennan Delivers Workshop on Quality Improvement in Beijing

During her 10-day trip to China, **Terese Brennan**, M.A., received a warm welcome from May's host organization, Stars and Rain, a non-governmental agency in Beijing that serves children with autism. Terese, May's Senior Vice President of Quality Improvement and Compliance, presented a leadership workshop on quality improvement (see photo).

"I discovered there are no adult services for people with autism in China," said Terese, who was one of three Americans selected to participate in the Professional Fellows Program, funded by the U.S. Department of State.

May previously served as host organization for the exchange program. Sun Zhongkai, Executive Director of Stars and Rain, spent a month at our Randolph campus.

He expressed a strong interest in implementing quality improvement systems for Stars and Rain. Terese was the ideal candidate for the fellowship that enabled her to



travel to China and share that expertise.

"For me, the big take-away was learning there are no formal regulations in place for safety risk management in China," said Terese. "There is so much we could do to assist. We can start by sharing existing May Institute resources and best practices they can modify to meet their needs."

To read the full article, visit mayinstitute.org/tbrennan/China.html. ■■■

SwAMP Camp in SPAAAAACE!

Approximately 30 students took part in the 4th annual summer SwAMP Camp (Science with Arts, Math, and Problem-Solving) at the May Center School for Autism and Developmental Disabilities in Randolph, Mass. In honor of the 50th anniversary of the moon landing, the theme was SwAMP Camp in SPAAAAACE!

Students participated in space-themed activities including making a movie about the moon landing. They looked up facts about the lunar landing and designed their own astronaut suits. The movie was filmed in front of the green screen, and some students learned about video editing.



While bottle rockets and catapulting water balloons have been popular in past SwAMP Camps, drawing with 3D printing pens and watching the 3D printer were favorite activities this year. Students also enjoyed camp games and songs.

"Every year I look forward to seeing which kids are really going to blossom in this environment, it's always a surprise, and it's always awesome," said **Lindsay Emmanuel**, M.Ed., Special Education Teacher and Curriculum Coordinator.

Lindsay had a big shout-out for so many fellow staff. The school's Specials team took the lead in creating epic educational activities. The Allied Health Team served as camp counselors. "So many staff and interns helped during our prep week," Lindsay shared, "cutting out wings and solar pizza ovens, and providing directions for activities." Congrats to all! ■■■

STORIES OF CELEBRATION AT MAY

First steps. First words. First day of school. First "I love you."

For families of children and adults with autism and other special needs, many "firsts" are not guaranteed. Some parents simply can't imagine their children making the progress necessary to achieve milestones that typically developing individuals achieve as they grow and move through life. A first dance or first job might seem as possible as a trip to the moon.

But they *are* possible. And celebrating them becomes an important part of the journey with autism and other special needs.

We were proud to launch our new "A Lifetime of Firsts" campaign in 2018. The campaign includes videos and stories about individuals, families, and staff who share their perspective on the power of firsts.



"For us, this campaign is about celebrating successes," explained **Eileen Pollack**, M.A., Senior Vice President of Communications and Public Relations. "We're always seeking ways to educate the general public about the challenges and joys that occur in the lives of the people we serve, and to showcase the impact of evidence-based services on their lives. A Lifetime of Firsts accomplishes all our goals."

We invite you to join us in our second year of celebrating firsts! You can view the videos by following us on social media, and by visiting www.mayinstitute.org/lifetime-of-firsts. ■■■

notable news

■ The *Boston Globe* published **Dr. Cynthia Anderson's** Letter to the Editor, "We Have to Push Back About Vaccine Misinformation." Dr. Anderson is May Institute's Senior Vice President of Applied Behavior Analysis.

■ On WBZ-TV's *4 Your Community* segment, **Dr. Cynthia Anderson** discussed the challenges adults with autism may experience as they work to develop skills that will enable them to become more independent.

■ May Institute's partnership with VERC Enterprises was highlighted in a WBZ-TV 4 segment that featured Randolph May Center School student Abby, her Job Coach **Kim Higgins**, and the school's Executive Director, **Cheryl White**, M.S.M., CAGS.

■ In the column, "Dispelling Common Misperceptions About Autism," published in the *Canton Journal*, clinical experts at May Institute offered key takeaways from the latest research and clinical findings.

■ **Brittany Juban**, Ph.D., LABA, BCBA-D, Clinical Director at the May Center School for Autism and Developmental Disabilities in West Springfield, Mass., authored the column, "Helping Students With Autism Make the Most of Summer," which was published in the *Randolph Herald*.

YOUR INVESTMENT AT WORK

One of the many individuals impacted by your donations to May Institute is 6-year-old Josh. Until he was 15 months old, Josh was hitting all his developmental milestones. Then his mother, Carol, noticed that Josh was suddenly becoming less verbal and less active. Carol knew the family needed help.

When a pediatrician diagnosed Josh with autism spectrum disorder, a family member suggested they reach out to May Institute. Josh began with home visits from May's Early Intervention staff. When he was 3 years old, he transitioned to one of the May Centers for ABA Services.



Josh enjoying music time while attending the May Center.

His progress was remarkable. May staff used ABA tailored specifically to Josh's needs to help him reach his goals focused on communication, social, play, and daily living skills. A few days a week, he would join May's daycare center to work on his social skills in large groups.

After two years of hard work at our center-based program, Josh transitioned to an inclusion kindergarten classroom. He receives additional services at school as needed, and his family is thrilled with his progress.

Your support directly impacts the children, adults and families we serve; families like Josh's, who feel as though they have their son back thanks to May.

To make your gift, visit mayinstitute.org/donate. View a news segment featuring Josh at mayinstitute.org/joshthxyou.html. ■■■



An Evening of Hope and Possibility

More than 350 people gathered at May Institute's signature fundraising event, *An Evening of Hope and Possibility*, to raise more than \$345,000 for innovative technology and program enhancements. The event featured remarks from Jolie Beaupre, a May parent, and the presentation of the President's Award to Leo Vercollone of VERC Enterprises.

To see event photos, visit mayinstitute.org/special-events. ■■■

We are grateful to our generous corporate partners who support our work.

at a glance



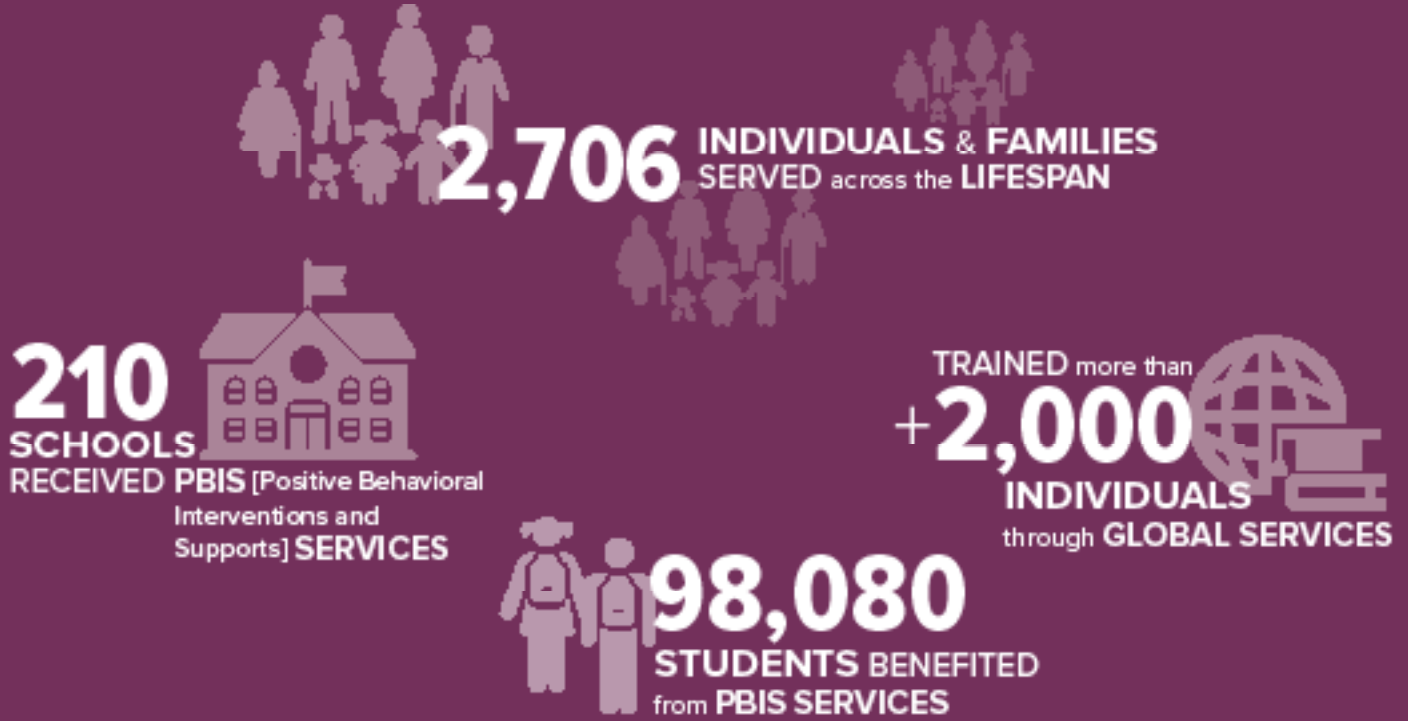
35 DOCTORAL-LEVEL
STAFF

98 BEHAVIOR
ANALYSTS

34 NURSING
STAFF



lives impacted



awareness & education



ADDRESS SERVICE REQUESTED

2018 annual report available!

Heartfelt thanks to everyone who contributed to May Institute during the past year! We are grateful to the individuals profiled in the pages of the Annual Report, and to their families for sharing their stories. They bring our mission to life.

You may view our digital 2018 annual report at www.mayinstitute.org/annualreport2018.



Join our online community!

We invite you to follow us on Facebook, LinkedIn, and Twitter. We'd love to connect with you!



Twitter
twitter.com/mayinstitute



Facebook
facebook.com/mayinstitute



LinkedIn
linkedin.com/company/the-may-institute



YouTube
youtube.com/mayinstitute6



Instagram
instagram.com/mayinstitute

ABOUT MAY INSTITUTE

May Institute is a nonprofit organization that is a national leader in the field of applied behavior analysis, serving individuals with autism spectrum disorder and other developmental disabilities, brain injury and neurobehavioral disorders, and other special needs.

Founded more than 60 years ago, we provide a wide range of exceptional educational and rehabilitative services across the lifespan.

The organization is one of the largest and most well-respected providers of services and special education schools for children and adults with autism and other special needs in Massachusetts and in the U.S.

May Institute has evolved into a national network that serves thousands of individuals and their families annually. With corporate headquarters in Randolph, Mass., the organization operates more than 140 service locations in more than a dozen states across the country.



@MAY Newsletter

is published by May Institute's
Office of Communications
41 Pacella Park Drive
Randolph, Massachusetts 02368

tel / 781.437.1348 fax / 781.437.1350
e-mail / jburgess@mayinstitute.org
web / www.mayinstitute.org

